

SATALite 2.5" HDD Enclosure

Compact and Powerful storage solutions for your SATA HDD

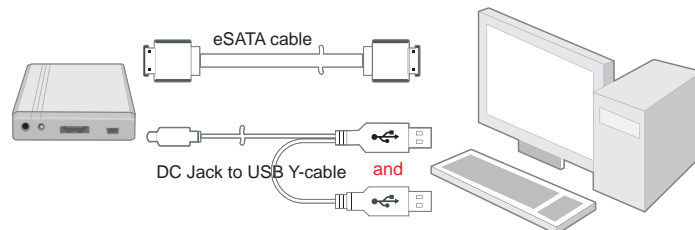
Features

- Supports current SATA II compliant HDDs, fully backward compatible with SATA 1.0 and SATA 1.0a compliant HDDs
- Provides bus power via DC Jack to USB cable
- Reduces power consumption with HDD spin down support
- Supports the hard drive with full-length bridge-board
- Connects to host by plug-n-play
- Minimizes device footprint with compact size
- Enhances durability and enables frequent HDD replacement with reinforced screw guides

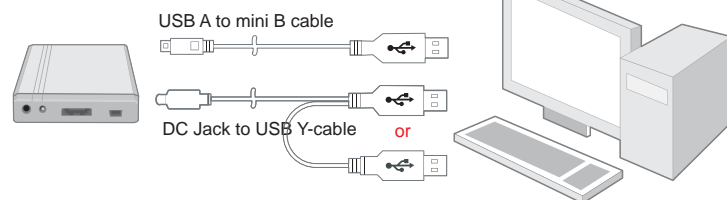
DT-S11J
2.5" eSATA/USB2.0



eSATA Connection



USB 2.0 Connection



Specifications

Model	DT-S11J
Interface	eSATA / USB 2.0
HDD Support	2.5", 9.5mm high SATA HDD
Connector	One USB mini-B receptacle One eSATA connector
Data Transfer Rate	eSATA: 300MBps USB: 480Mbps
LED	Power On / Access / Power Off
Material	Cabinet: Aluminum Front and rear panel: Plastic
Dimension (L x W x H)	133 x 76 x 16 mm
Weight (w/o HDD)	113 g
Power Supply	Bus power from host via DC Jack to USB Y-cable*

